



Finishing & Polishing Guide



Clinician's Choice®

Finishing & Polishing Quick Reference Guide	A.S.A.P.® All Surface Access Polishers 	A.S.A.P.® Dailies All Surface Access Diamond Polishers 	A.S.A.P.® Diamond Polishing Brushes 	A.S.A.P.® Indirect+ All Surface Access Polishers 	Contours™ Finishing & Polishing Discs 	D-Fine Double Diamond™ 	Groovy® Diamond Polishing Brushes 	D-Fine Shape & Shine™ Single Step Diamond Polishers 	Contours™ Coarse Anatomy Trimmers 	Final Shine Cotton Polishing Wheels 
Nano/Nanohybrid Composite	✓	✓	✓	✓	✓	✓	✓	✓	✓	✓
Microfill	✓	✓	✓	✓	✓	✓	✓	✓	✓	✓
Porcelain	✓	✓	✓	✓		✓	✓			✓
Zirconia	✓	✓	✓	✓		✓				✓
Lithium Disilicate	✓	✓	✓	✓		✓				✓
Bisacryl	✓	✓	✓		✓		✓			✓
Denture Acrylic	✓	✓	✓							✓



A.S.A.P.®

All Surface Access Polishers

A.S.A.P.® Polishers are a simple and effective, two-step intraoral polishing system that provides a high luster and shine in as little as 30 seconds.

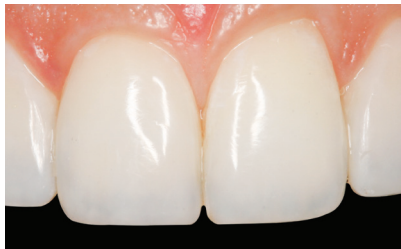
- **Access to All Surfaces:** The spiral shape allows access to all surfaces of the restoration, reducing the need to inventory multiple systems.
- **Fast, High Shine:** A.S.A.P. polishers (Pre-polisher and Final High Shine) are diamond-impregnated, providing a 67% faster polish and an 86% higher gloss than a leading polishing system¹.
- **Durable:** A.S.A.P. Polishers can be autoclaved up to thirty (30) cycles, making them durable and cost-effective*.



A.S.A.P. Pre-polisher



A.S.A.P. Final High Shine Polisher



The final result

Dentistry and photography courtesy of Danièle Larose, DMD, AAACD.

¹University of Alabama at Birmingham, School of Dentistry. April 2022. Gloss of composites with the use of two polishing systems.

*Placing excessive pressure on the polisher will lead to premature degradation. The polishers will also wear out faster on harder indirect surfaces.

A.S.A.P.[®] Dailies

All Surface Access Diamond Polishers

Take esthetics to a new level of efficiency and convenience with diamond-impregnated **A.S.A.P.[®] Dailies**, the next generation of daily-use polishing.

- A.S.A.P. Dailies provide all surface access polishing for direct and indirect restorations including: composite, ceramic, zirconia, lithium disilicate and provisionals.
- A.S.A.P. Dailies are designed for multiple use in a single day and deliver a fast, high shine polish in as little as 30 seconds.
- Delivering consistent results after multiple sterilization cycles*, diamond-impregnated A.S.A.P. Dailies reduce your cost-per-use without sacrificing performance.

*Minimum 3 sterilization cycles.



Upper right central composite veneer after pre-contouring with Contours™ Finishing and Polishing Discs.



Using a light wiping motion, the 45-micron diamond-impregnated Pre-polisher (purple) is applied to the restorative surface.



The Final High Shine Polisher (peach) is applied for 15-20 seconds. A high luster shine is the result.



Final restoration utilizing Evanesce® Universal shade B2 and A.S.A.P. Dailies.

A.S.A.P.®

Diamond Polishing Brushes

A.S.A.P.® Diamond Polishing Brushes quickly produce a high gloss polish on both incline planes, ridges, pits, and grooves, all with one size and shape.

- Diamond-impregnated bristles spread over cusp tips and marginal ridges, while the individual bristles polish the narrowest of grooves without altering anatomy.
- The purple Pre-polisher removes small surface defects in less than 20 seconds.
- The peach Final Polisher is then applied for another 20 seconds to produce a natural and long-lasting luster.



The A.S.A.P. Pre-polisher easily gets into occlusal grooves to smooth the surface and produce an initial luster, without changing anatomy.

Dentistry and photography courtesy of Sunny Virdi, DMD.



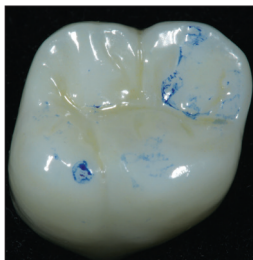


A.S.A.P.® Indirect+

All Surface Access Polishers

The **A.S.A.P.® Indirect+** polishing system allows for chairside adjustments and delivers an outstanding shine on all indirect ceramic restorations.

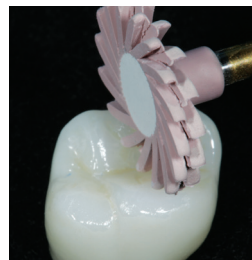
- **Chairside Refinement:** Multi-shaped adjusters allow for minor refinements both intra- and extraorally.
- **Polish in Seconds:** A.S.A.P. Indirect+ polishers restore a high luster on zirconia, lithium disilicate, and ceramic surfaces in under a minute.
- **Efficient & Durable:** Diamond-impregnated A.S.A.P. Indirect+ polishers eliminate the need for polishing paste and withstand up to 30 autoclave cycles.



To make minor adjustments or to remove scratches caused by diamond bur adjustments, the A.S.A.P. Indirect+ Coarse Adjuster (available in a disc, point or cylinder shape) can be used on any zirconia, lithium disilicate or ceramic prosthesis.



The A.S.A.P. Indirect+ Pre-polisher is used to smooth the prosthetic surface and establish an initial gloss.



The A.S.A.P. Indirect+ Final Polisher creates a stunning high luster in seconds.



Contours™

Finishing & Polishing Discs

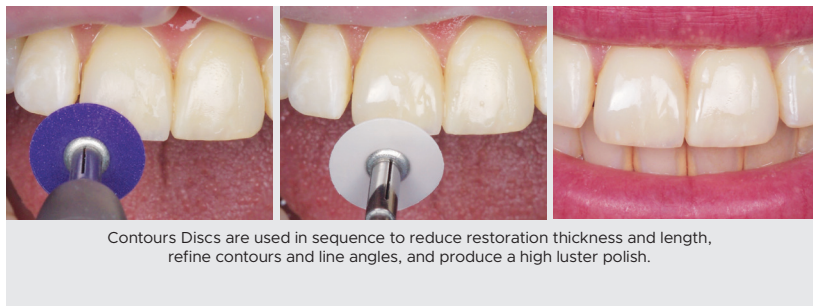


Contours™ Finishing and Polishing Discs are a color-coded, easy to use sequence of semi-flexible aluminum oxide discs, designed to efficiently shape and refine your composite restoration, while polishing it to a life-like luster.

- The Contours Finishing and Polishing Disc system is available in the two most popular sizes of 3/8" and 1/2" diameters and is designed to be used in sequence from coarse to superfine.
- Consistent flex allows for control without gouging at the margin and minimizes any scarring of the surface from accidental contact with the metal center.
- 3/8" disc are indicated for margins and areas near the papilla, as well as on posterior and/or pedodontic restorations.
- The 1/2" disc is perfect for larger surface reduction, contouring and polishing.
- Coarse and medium grit discs can also be used to establish surface texture as well as prepare the composite for A.S.A.P.® Pre- and Final High Shine Polishers as part of an esthetic finishing and polishing regimen.

INTUITIVE COLOR CODING

	Coarse	Fine	Superfine
3/8" 9.5 mm			
1/2" 12.7 mm			



Dentistry and photography courtesy of Todd C. Snyder, DDS, FAACD.

D-Fine

Double Diamond™

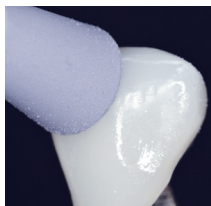
Polishing System for Hybrid Composites and Porcelain

The **D-Fine Double Diamond™ Polishing System** gives you the freedom to effectively polish both porcelain and hybrid composite surfaces with the same polisher.

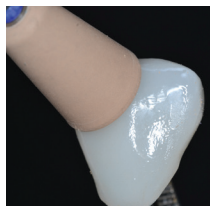
- The 45 micron diamond Primary Polishers (purple) help create a smooth surface topography on hybrid composites and porcelain.
- The 5 micron diamond Final High Shine Polishers (peach) create a high shine in less time with the use of light to moderate pressure with intermittent water spray.
- D-Fine Double Diamond Polishers are flexible and when applied properly will splay, closely hugging the surface topography and polishing without the risk of ditching the gingival margins.
- Polishers are multi-use and can be autoclaved 12 times or more, drastically reducing the cost per use.



Facial view of e.max crown after occlusal adjustments. Note matte surface caused by the adjustments at the buccal-incisal area.



Using a light wiping motion, the D-Fine Double Diamond Primary Polisher (45 micron diamond particles) is used to create the initial polish.



Using light pressure with the D-Fine Double Diamond Final High Shine Polisher creates the final high-gloss finish. Water spray is recommended.



A final high shine is achieved in about a minute of chair time.



Double Diamond
Primary Polishers



Double Diamond Final
High Shine Polishers



Groovy Diamond[®]

Polishing Brushes

Groovy Diamond[®] Polishing Brushes are diamond-impregnated bristle brushes that create an ultra-high shine by polishing the surface grooves and detailed anatomy that you spend valuable chair time creating. The Groovy Diamond Polishing Brush technique is simple and efficient and won't leave behind that lifeless flat surface that often occurs with disc finishing systems.

- Groovy Diamond Polishing Brushes work faster than silicone rubber brushes, provide a higher shine and will not lose their bristles like other polishing brushes. And with Groovy, there is no need for multiple steps or messy polishing pastes.
- Groovy Brushes can be autoclaved and reused dozens of times.
- Groovy Diamond Polishing Brushes work on all nano and hybrid composites, porcelain, and bisacryl temporaries. They're truly universal!



Upper left central composite veneer after pre-contouring with Contours Coarse Anatomy Trimmer point.



Use light, intermittent pressure with Groovy Universal Brush to create polish.



Final high luster shine created by Groovy Polishing Brush.

D-Fine Shape & Shine™

Single Step Diamond Polishers

D-Fine Shape & Shine™ single step diamond-impregnated polishers allows clinicians to effortlessly shape, contour, and polish cured composite material, all in a single step.

- 45 micron size diamond particles can conservatively contour composite when additional pressure is applied.
- During polishing, diamond particles continuously break down, getting smaller in just seconds; resulting in a high luster, unrivalled finish on all hybrid and nano-filled composite materials.
- Autoclavable at 270°F to 275°F, providing 6-10 uses per polisher.
- Available in 6 shapes to facilitate all restorative requirements.



Nano-filled composite veneer adapted and light-cured.



Final high luster composite surface created using the Shape & Shine polishers.

Dentistry and photography courtesy of Bob Margeas, DDS.

Contours™

Coarse Anatomy Trimmers



Contours™ Coarse Anatomy Trimmers are designed to create secondary anatomy on your microfill or hybrid composite restorations.

- Use Contours for refining the gross anatomy, removing striations, and to create secondary grooves, lobes, and characterization in the restoration.
- Trim composite quickly, without significant degradation.
- Available in 4 shapes perfectly suited for every anterior or posterior restoration.



Final Shine

Cotton Polishing Wheels



Disposable, single-use **Final Shine Cotton Polishing Wheels** are made from ultra-soft cotton fibers that are bundled together to form a thick latch-driven applicator for aluminum oxide and ceramic polishing paste.

- Polishing paste becomes incorporated within the fibers, minimizing splatter while keeping the paste against the surface of the restoration.
- Designed to keep the attached metal mandrel at a safe distance from the composite or ceramic surface and will not damage the soft tissue or induce bleeding.
- Using light pressure and low RPMs (approx. 6,000), work the paste into the restoration using a circular motion for 20-30 seconds ensuring that there is sufficient polishing paste on the Final Shine Cotton Polishing Wheel.

Starter Kit (130917)

12 Polishers (3 x Pre-polishers Small, 3 x Pre-polishers Large, 3 x Final High Shine Polishers Small, 3 x Final High Shine Polishers Large)

REFILL OPTIONS:

2-Packs

1 x Pre-polisher, 1 x Final High Shine Polisher

Small (130910)

Large (130911)

3-Pack (specify shape)

3 x Pre-polisher Small (131011)

3 x Pre-polisher Large (131012)

3 x Final High Shine Polisher Small (132013)

3 x Final High Shine Polisher Large (132014)

6-Pack

3 x Pre-polishers, 3 x Final High Shine Polishers

Small (130913)

Large (130912)

Bulk Packs (specify shape)

12 x Pre-polisher Small (130927)

12 x Pre-polisher Large (130928)

12 x Final High Shine Polisher Small (130925)

12 x Final High Shine Polisher Large (130926)

50-Pack (133160)

50 Polishers (25 x Pre-polishers, 25 x Final High Shine Polishers)

Polishing Brush and Wheel System Kit (133155)

4 Pre-polisher Wheels (2 x Large, 2 x Small),
4 Final High Shine Wheels (2 x Large, 2 x Small),
2 Pre-polisher Diamond Brushes,
2 Final Polisher Diamond Brushes

Trial Pack (133159)

1 x Pre-polisher, 1 x Final Polisher

REFILL OPTIONS:

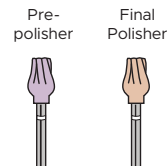
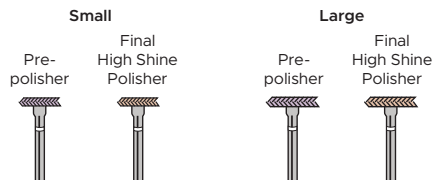
3-Pack (specify shape)

3 x Pre-polisher (133156)

3 x Final Polisher (133157)

6-Pack (133158)

3 x Pre-polishers, 3 x Final Polishers



A.S.A.P.® Indirect+

All Surface Access Polishers

Intraoral/RA Starter Kit (130918)

3 Coarse Adjusters (1 x Point, 1 x Disc, 1 x Cylinder),
1 x Pre-polisher, 1 x Final Polisher

INTRAORAL REFILL OPTIONS:

2-Pack (130919)

1 x Pre-polisher, 1 x Final Polisher

3-Pack (specify shape)

3 x Point Adjuster (130922) 3 x Pre-polisher (130920)
3 x Cylinder Adjuster (130923) 3 x Final Polisher (130921)
3 x Disc Adjuster (130924)

Extraoral/HP Starter Kit (130940)

2 Coarse Adjusters (1 x Disc, 1 x Cylinder),
2 x Pre-polisher, 2 x Final Polisher

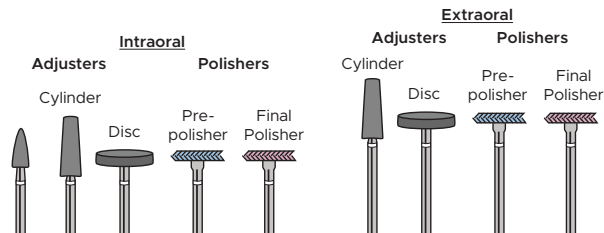
EXTRAORAL REFILL OPTIONS:

2-Pack (130941)

1 x Pre-polisher, 1 x Final Polisher

3-Pack (specify shape)

3 x Cylinder Adjuster (130944) 3 x Pre-polisher (130942)
3 x Disc Adjuster (130945) 3 x Final Polisher (130943)



Contours™

Finishing & Polishing Discs

Starter Kit (3/8") (133002)

400 discs (100ea: 3/8" Coarse, Medium, Fine, Superfine), 1 mandrel

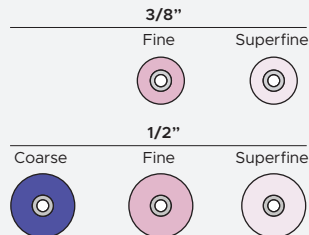
Trial Kit (133003)

200 discs (25ea: 1/2" Coarse, Medium, Fine, Superfine, 25ea: 3/8" Coarse, Medium, Fine, Superfine), 1 mandrel

Refill Options:

Disc Refill 85-Packs (specify shape)

1/2" Coarse (133004)
1/2" Fine (133006)
1/2" Superfine (133007)
3/8" Fine (133010)
3/8" Superfine (133011)



D-Fine

Double Diamond™

Polishing System for Hybrid Composites and Porcelain

Starter Kit (132907)

4 x Primary Polishers, 4 x Final High Shine Polisher
(1 of each shape)

Refill Options:

Primary Polisher 12-Pack

(specify shape)

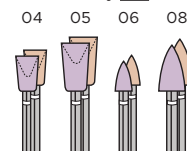
Shape #04 (131504) Shape #06 (131506)
Shape #05 (131505) Shape #08 (131508)

Final High Shine Polisher 12-Pack

(specify shape)

Shape #04 (132504) Shape #06 (132506)
Shape #05 (132505) Shape #08 (132508)

Each shape available in Primary and Final High Shine Polisher



Groovy Diamond®

Polishing Brushes

Mix Pack (650623)

2 x Universal, 2 x Mid-Size, 2 x Occlusal

Tri-Pack (650124)

4 x Universal, 4 x Occlusal, 4 x Mid-Size

Refill Options:

6-Pack (specify shape)

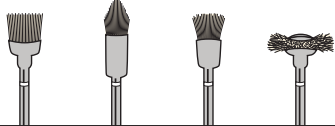
6 x Universal (**650601**)

6 x Occlusal (**650602**)

6 x Mid-Size (**650604**)

6 x Wheel (**650605**)

Universal Occlusal Mid-Size Wheel



D-Fine

Shape & Shine™

Single Step Diamond Polishers

Trial Pack (415906)

12 Polishers (2 of each shape)

Refill Options:

10-Pack

10 Polishers, Single shape (specify shape)

#01 (**415501**)

#02 (**415502**)

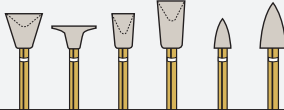
#04 (**415504**)

#05 (**415505**)

#06 (**415506**)

#08 (**415508**)

01 02 04 05 06 08



Contours™

Coarse Anatomy Trimmers

Refill Options:

20-Pack

20 Trimmers, Single shape
(specify shape)

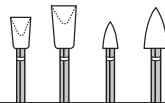
#04 (**078204**)

#05 (**078205**)

#06 (**078206**)

#08 (**078208**)

04 05 06 08



Final Shine

Cotton Polishing Wheels

50-pack (133500)



BACKED BY OUR 30-DAY TRY-IT GUARANTEE



Clinician's Choice®



www.clinicianschoice.com

